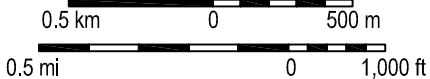


Former Raytheon Facility

Scale 1:25,000





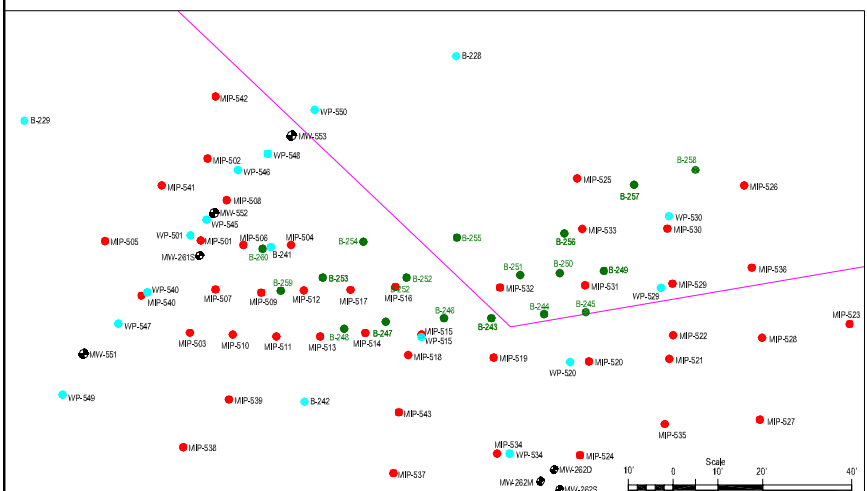
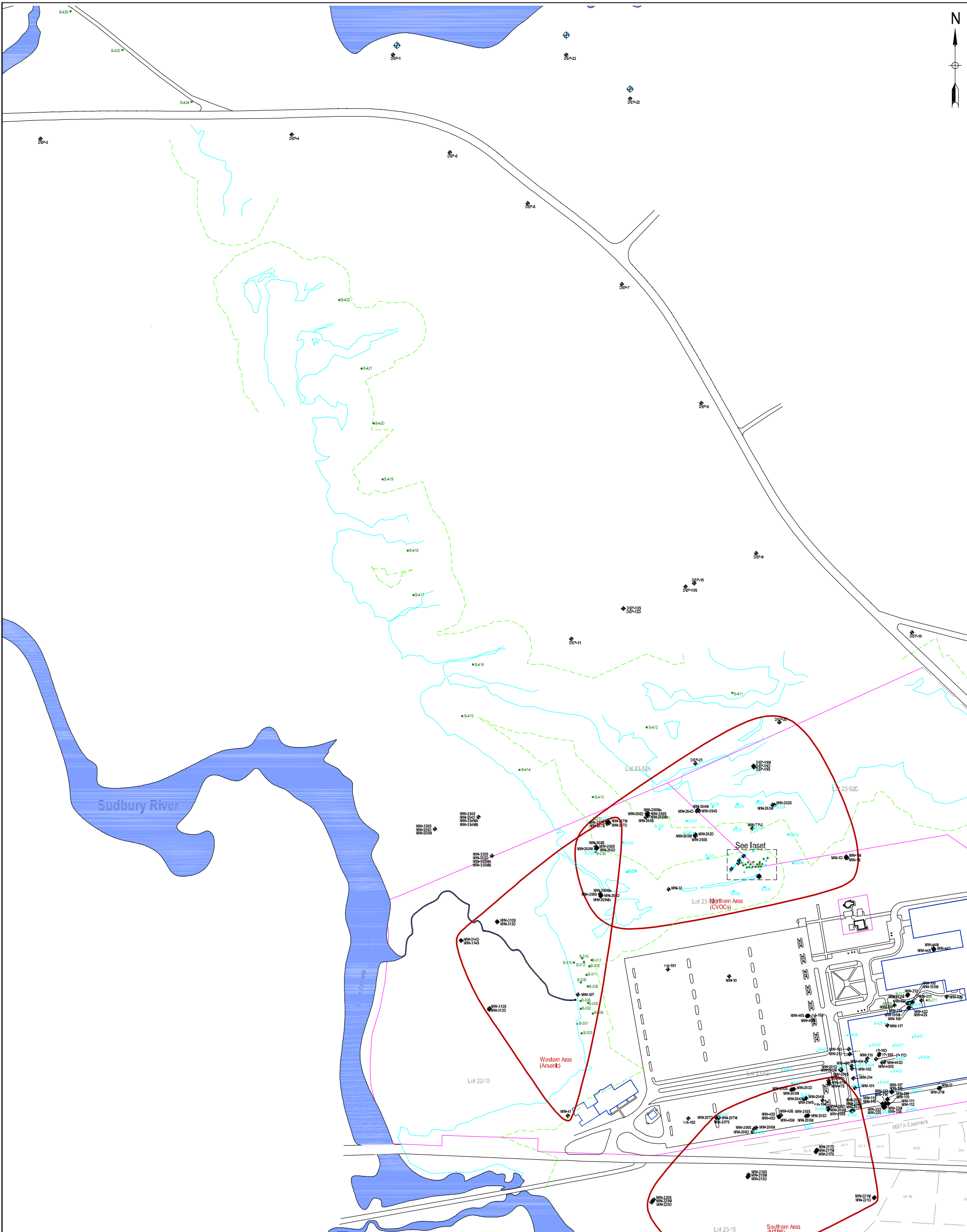
Legend	
	Subject Property Line
	Disposal Site Boundary

Figure 1 - Site Locus Map
Former Raytheon Facility - Wayland, MA





- Legend**
- Property Line
 - Standing Water Based on 2001 Aerial Photo
 - Delineated Wetland Boundary
 - 100' Wetland Buffer Zone
 - Monitoring Well Cluster Location
 - DEP Monitoring Well Location
 - Baldwin Pond Wells
 - Waterloo Profiler Location
 - Soil Boring Location
 - MIP Boring Location
 - Source Area Investigation Area

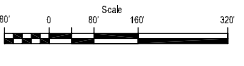
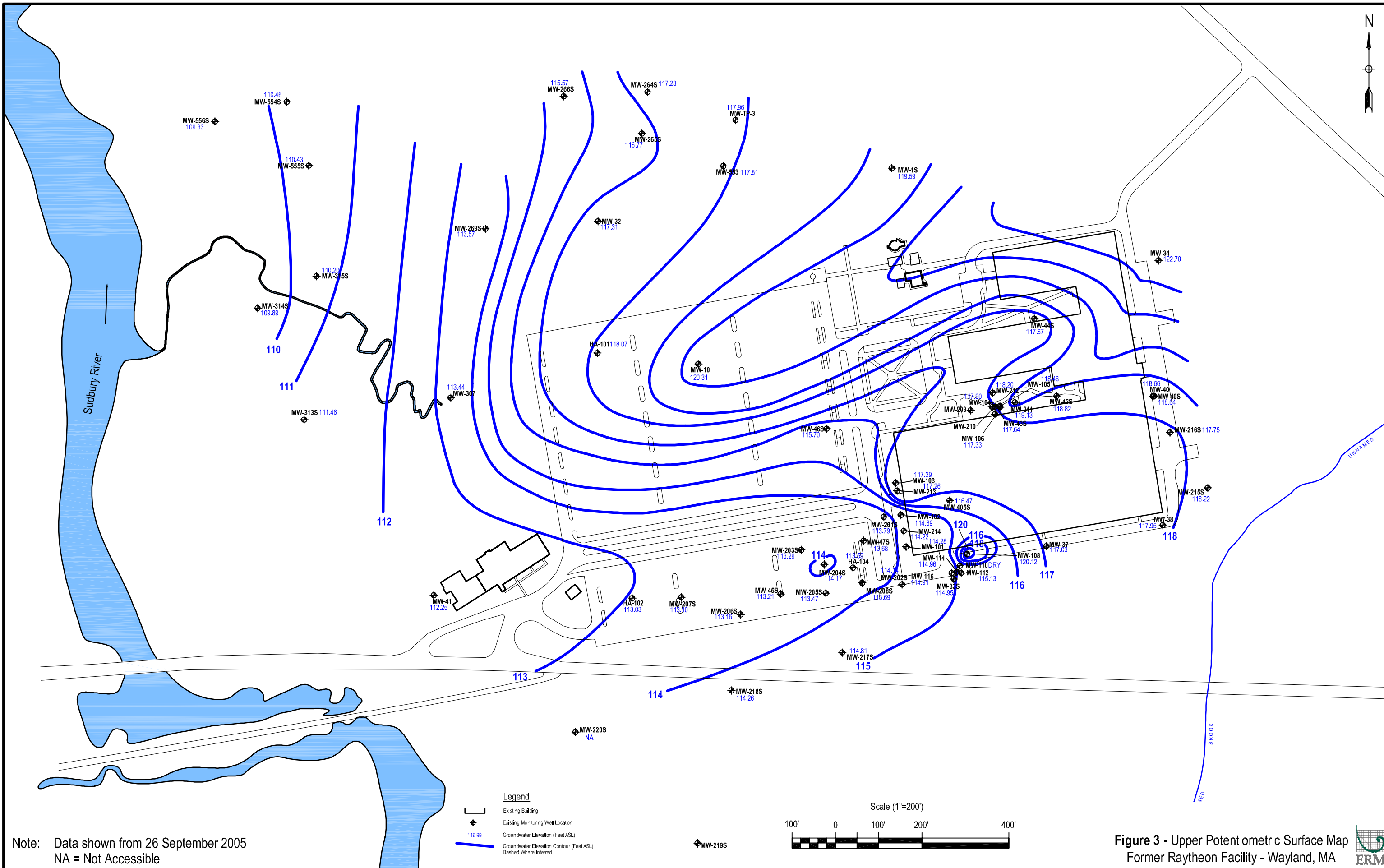


Figure 2 - Site Map
Former Raytheon Facility - Wayland, MA



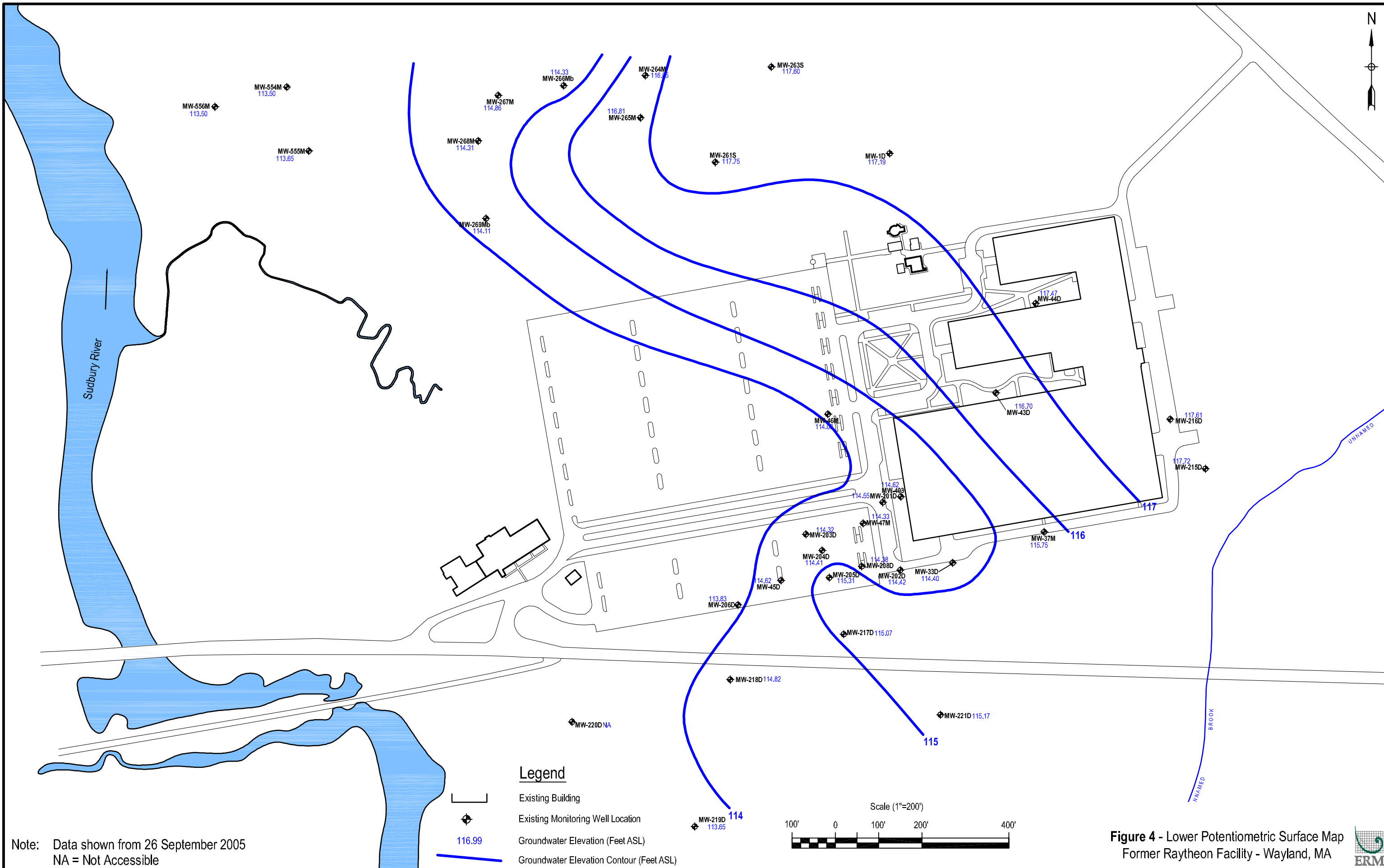
ERM
 1000 North Main Street
 Suite 200
 Boston, MA 02111
 Tel: 617.552.3000
 Fax: 617.552.3001
 www.erm.com



Note: Data shown from 26 September 2005
NA = Not Accessible

R:\Raytheon\Wayland - 1922\REPORT - Phase 2 Northern Area\Raytheon GV NA Ph2.DWG (10/19/2005 - 11:22am Boston)



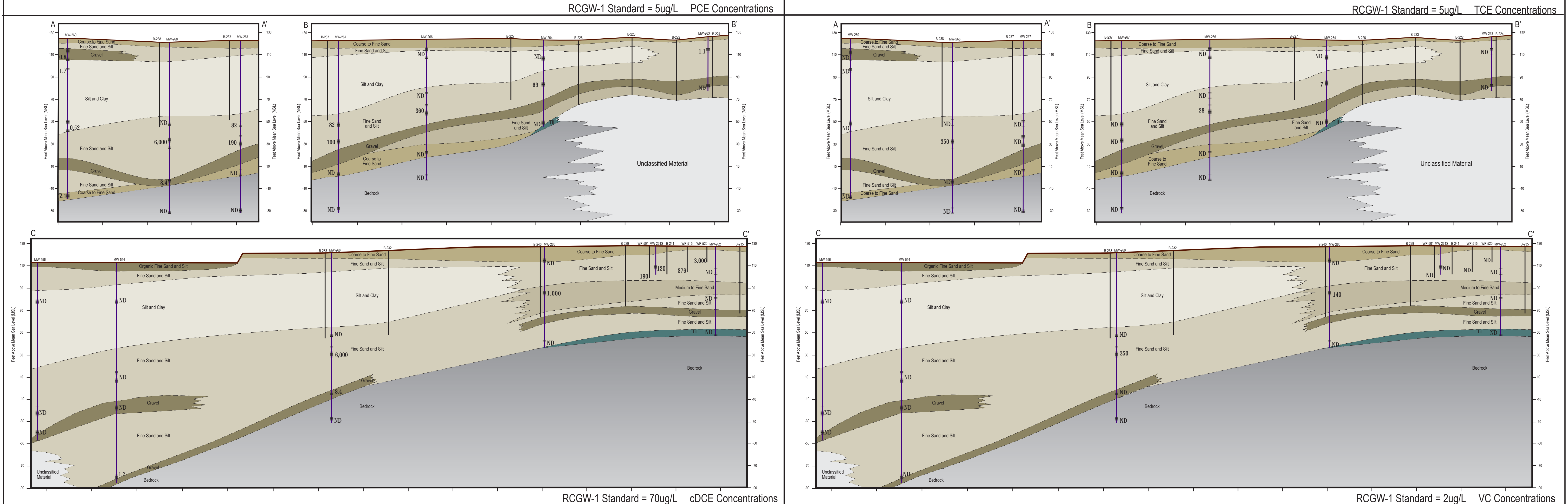
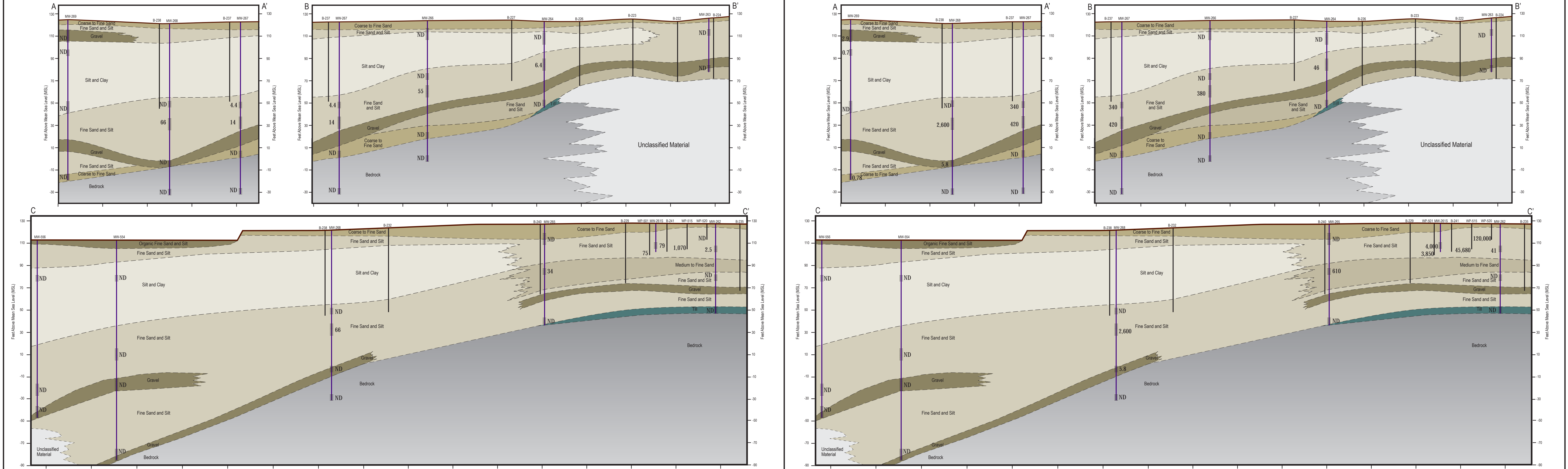


Note: Data shown from 26 September 2005
 NA = Not Accessible

Figure 4 - Lower Potentiometric Surface Map
 Former Raytheon Facility - Wayland, MA



R:\Raytheon\Wayland - 1922\REPORT - Phase 2 Northern Area\Raytheon GV NA Ph2.DWG (10/19/2005 - 11:23am Boston)



Legend

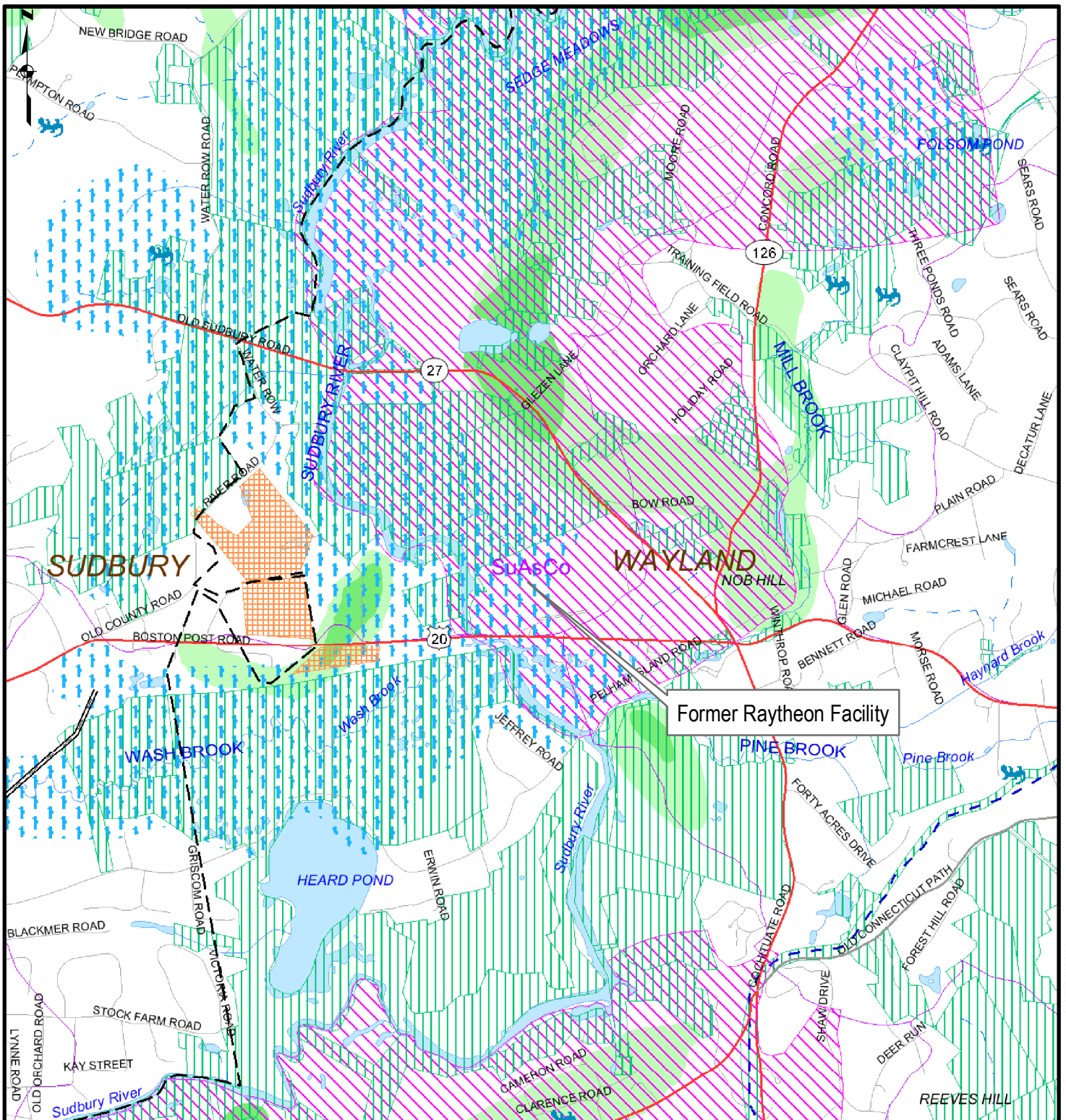
- Monitoring Well: Well ID
- Soil Boring: Boring ID
- Compound Concentration/Duplicate (ug/L)
- Screened Interval/ Sample Point
- 10 Foot Well Screen
- 5 Foot Well Screen

Scale:
 Horizontal Scale 1" = 80'
 Vertical Scale 1" = 40'

Note: Concentration Values from April 2005 Sample Analyses

Figure 5 - Cross Sections of Northern Area Groundwater CVOC Concentrations Former Raytheon Facility - Wayland, MA

ERM



Legend

Zone A	NHESP Estimated Habitat of Rare Wildlife in Wetland Areas
IWPA	Non Potential Drinking Water Source Area
Zone II	HIGH YIELD
ACEC	MEDIUM YIELD
Solid Waste Sites	WETLANDS
	SALTWATER WETLANDS
	Protected Openspace

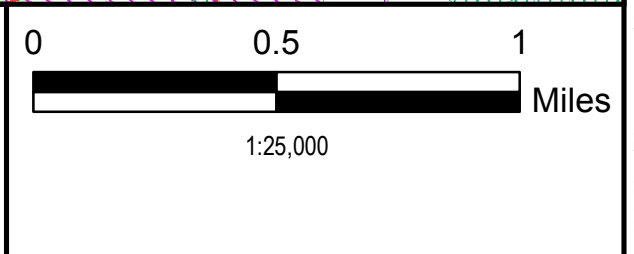

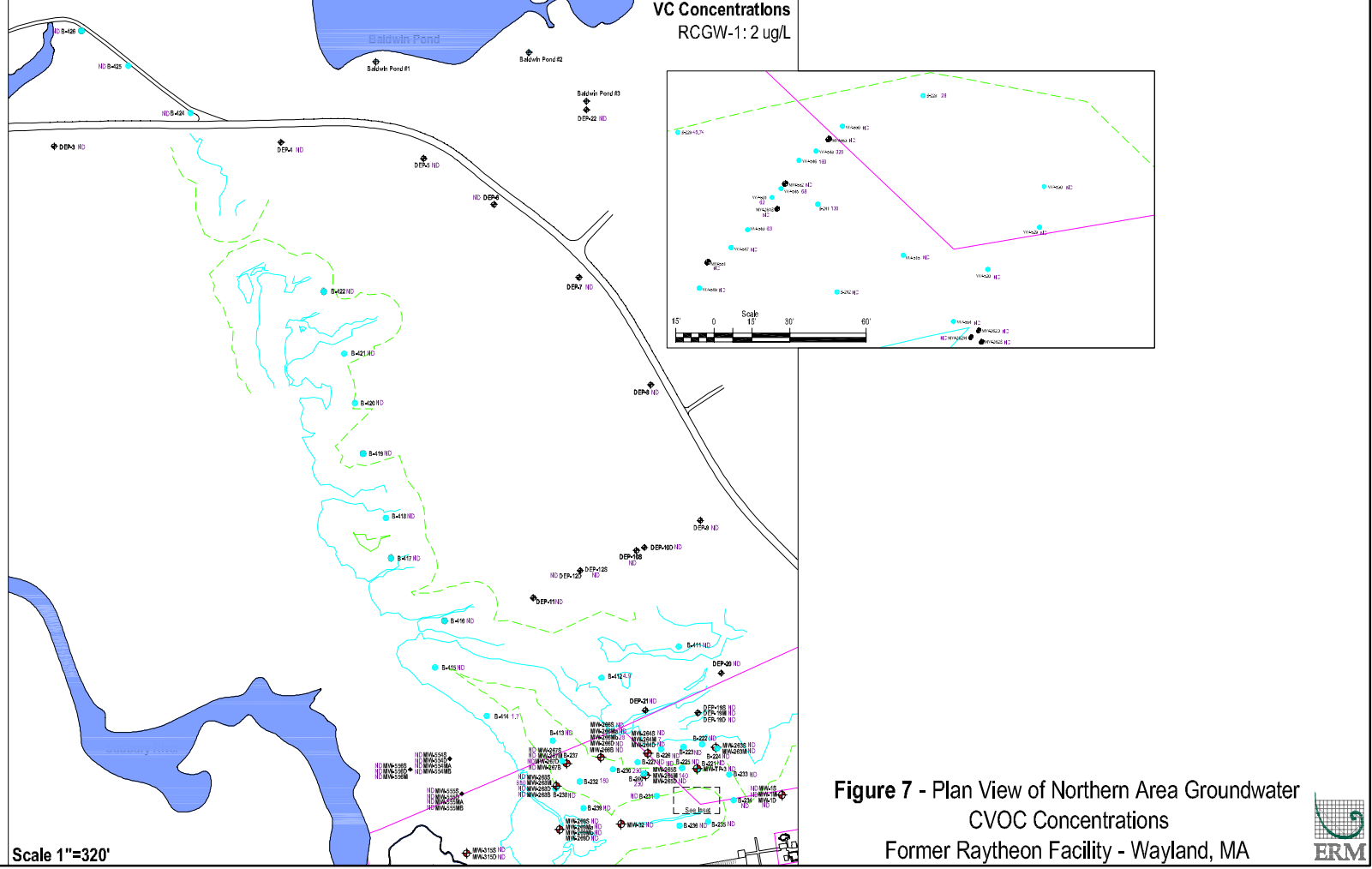
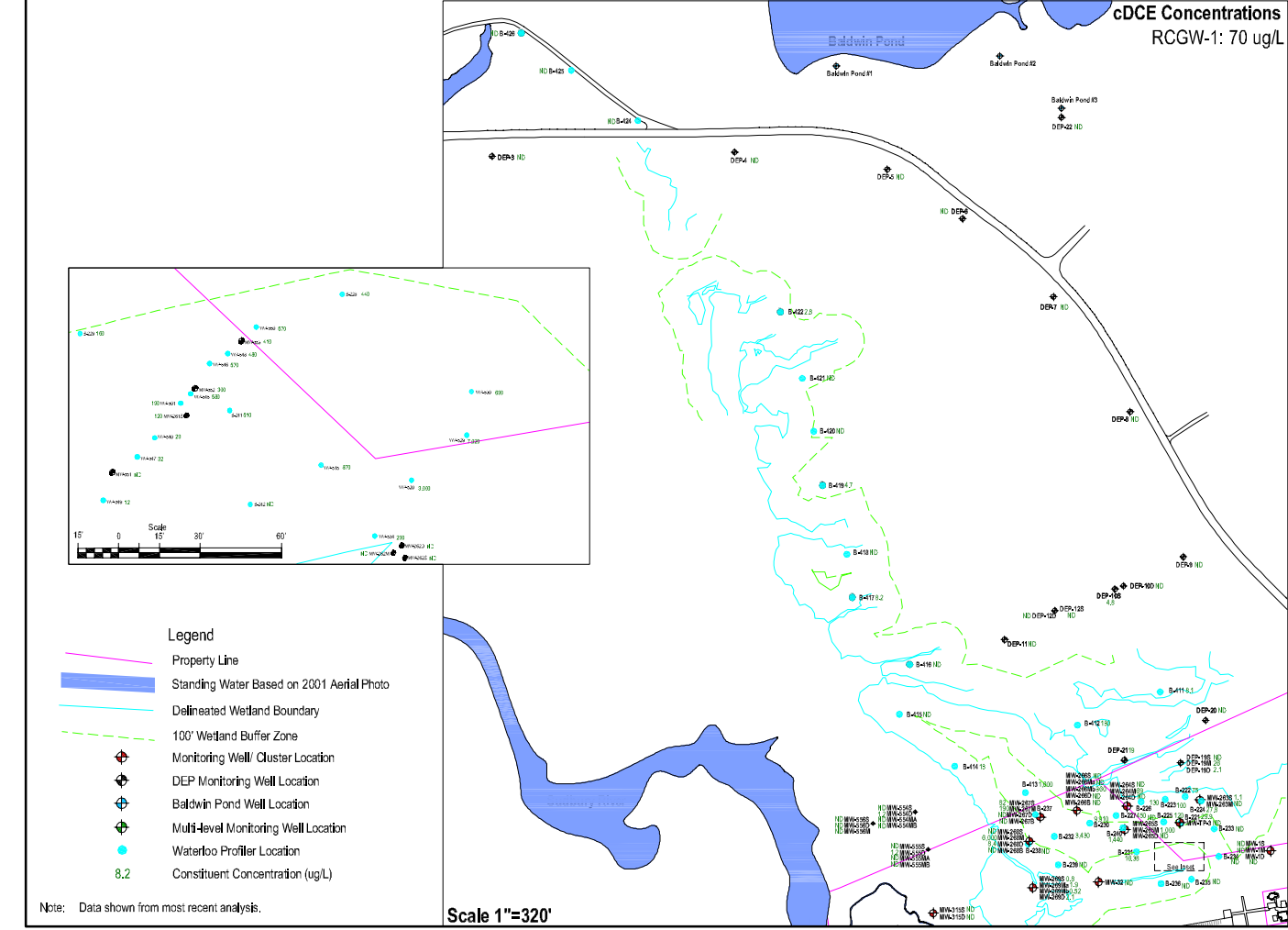
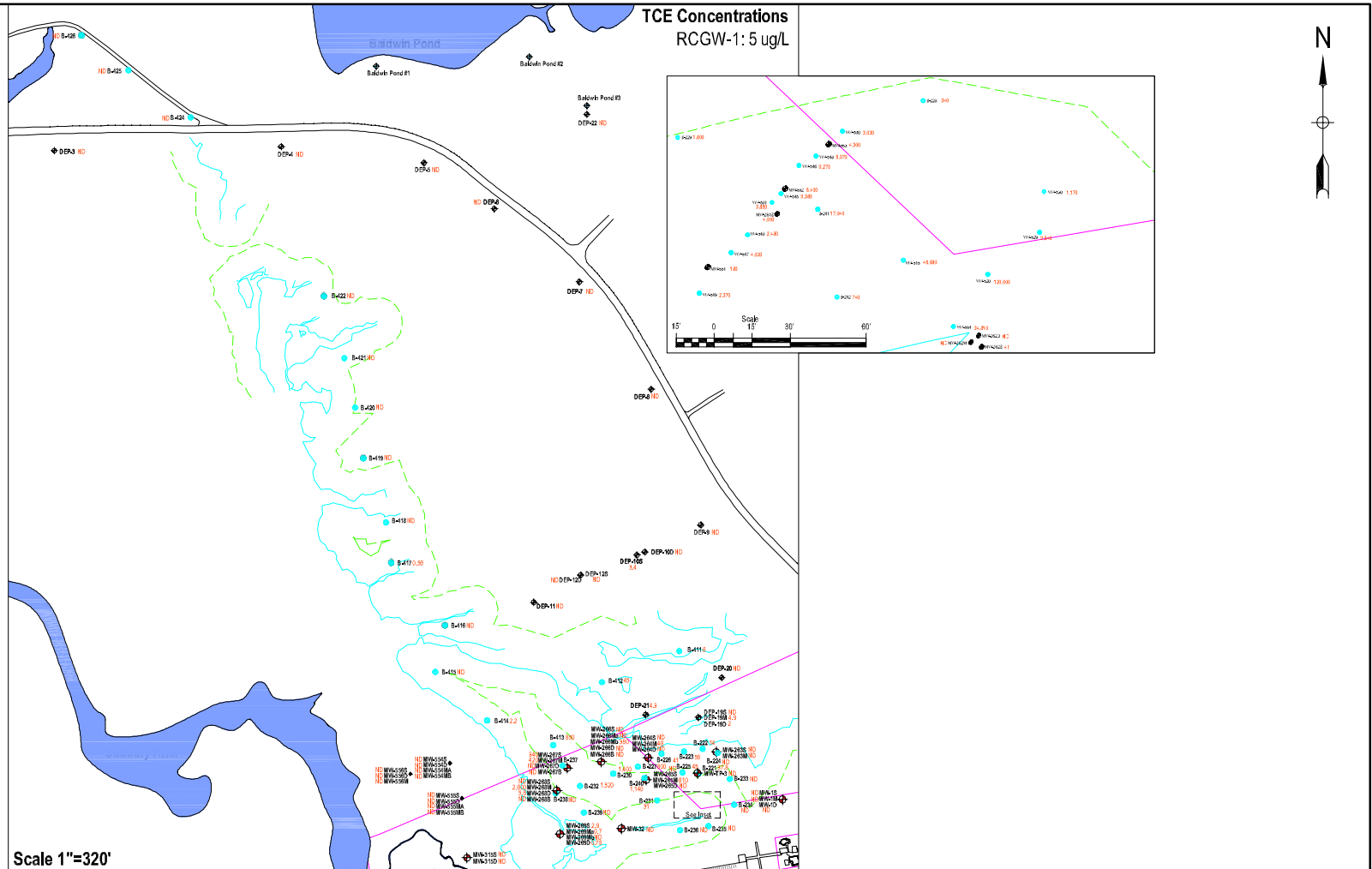
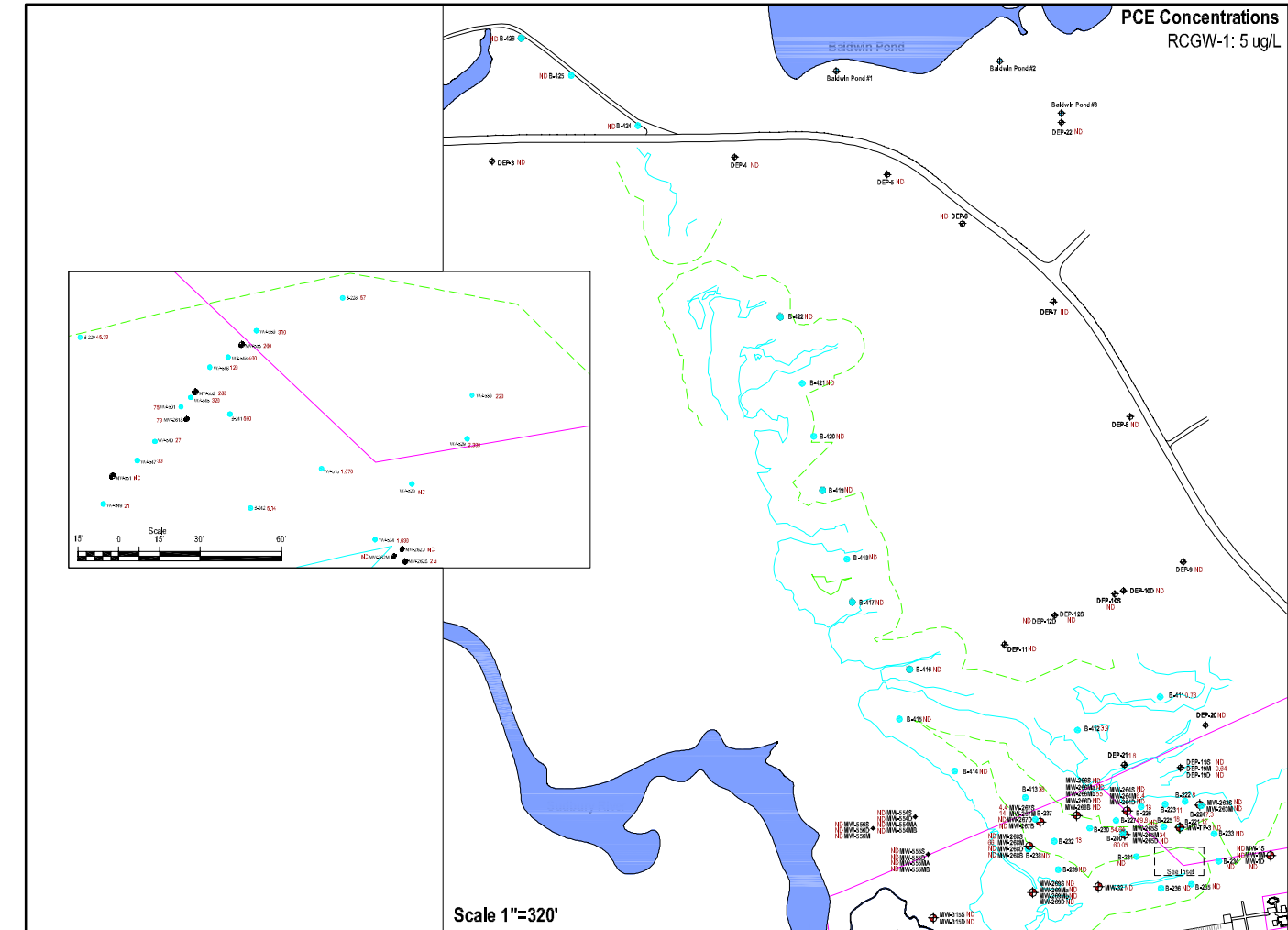


Figure 6- Massachusetts GIS Site Scoring Map
Former Raytheon Facility - Wayland, MA



Source: MassGIS DEP MCP (21E) Map

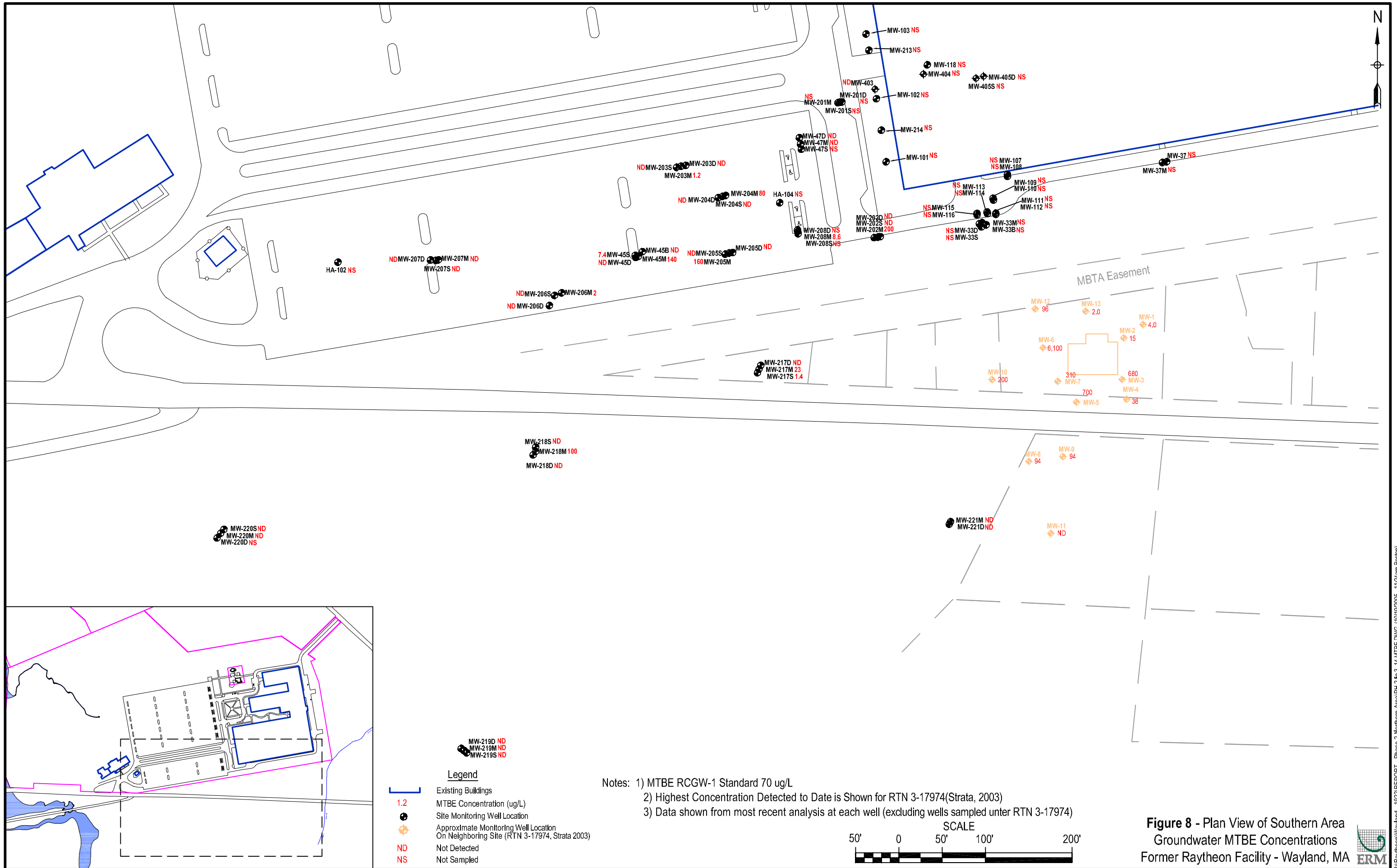


- Legend**
- Property Line
 - Standing Water Based on 2001 Aerial Photo
 - Delineated Wetland Boundary
 - 100' Wetland Buffer Zone
 - Monitoring Well Cluster Location
 - DEP Monitoring Well Location
 - Baldwin Pond Well Location
 - Multi-Level Monitoring Well Location
 - Waterloo Profiler Location
 - 8.2 Constituent Concentration (ug/L)

Note: Data shown from most recent analysis.

Figure 7 - Plan View of Northern Area Groundwater CVOC Concentrations
Former Raytheon Facility - Wayland, MA





Legend

- Existing Buildings
- 1.2 MTBE Concentration (ug/L)
- Site Monitoring Well Location
- ⬢ Approximate Monitoring Well Location On Neighboring Site (RTN 3-17974, Strata 2003)
- ND Not Detected
- NS Not Sampled

Notes: 1) MTBE RCGW-1 Standard 70 ug/L
 2) Highest Concentration Detected to Date is Shown for RTN 3-17974(Strata, 2003)
 3) Data shown from most recent analysis at each well (excluding wells sampled under RTN 3-17974)

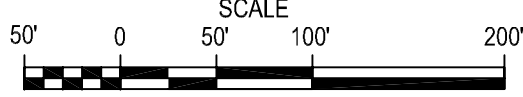


Figure 8 - Plan View of Southern Area Groundwater MTBE Concentrations Former Raytheon Facility - Wayland, MA



Figure 9 - Eh - pH Distribution for Historic Groundwater Arsenic Detections
(Concentrations Labeled, Red = at or above RCGW-1 of 0.050 mg/L, Blue = below RCGW-1 of 0.050)

